



KILLARK®

INSTALLATION, OPERATION & MAINTENANCE DATA SHEET

GO113 N34, GO114 N34, GOL113 & GO1114
ROTARY OPERATORS FOR POTENTIOMETERS,
FOR CLASS I, GROUPS B, C & D, CLASS II, GROUPS E, F &
G AND CLASS III HAZARDOUS LOCATIONS AND TYPE 3, 4
& 4X ENCLOSURES



GO113 N34, GO114 N34, GOL113 & GO1114 ROTARY OPERATORS FOR POTENTIOMETER

CAUTION:

Before installing, make sure you are compliant with area classifications, failure to do so may result in bodily injury, death and property damage. Do not attempt installation until you are familiar with the following procedures. All installation must comply with the applicable Electrical Code.

Make sure that the circuit is de-energized before starting installation or maintenance.

Verify that the installation is grounded. Failure to ground will create electrical shock hazards, which can cause serious injury and or death.

Technical information, advice and recommendations contained in these documents is based upon information that Killark believes to be reliable. All the information and advice contained in these documents is intended for use only by persons having been trained and possessing the requisite skill and know-how and to be used by such persons only at their own discretion and risk. The nature of these instructions is informative only and does not cover all of the details, variations or combinations in which this equipment may be used, its storage, delivery, installation, check out, safe operation and maintenance. Since conditions of use of the product are outside of the care, custody and control of Killark, the purchaser should determine the suitability of the product for his intended use, and assumes all risk and liability whatsoever in connection therewith.

KILLARK®



3940 Dr. Martin Luther King Drive
St. Louis, MO 63113

P/N 00911740 FORM NO. K1081 R11/08 ECO-3-045-08

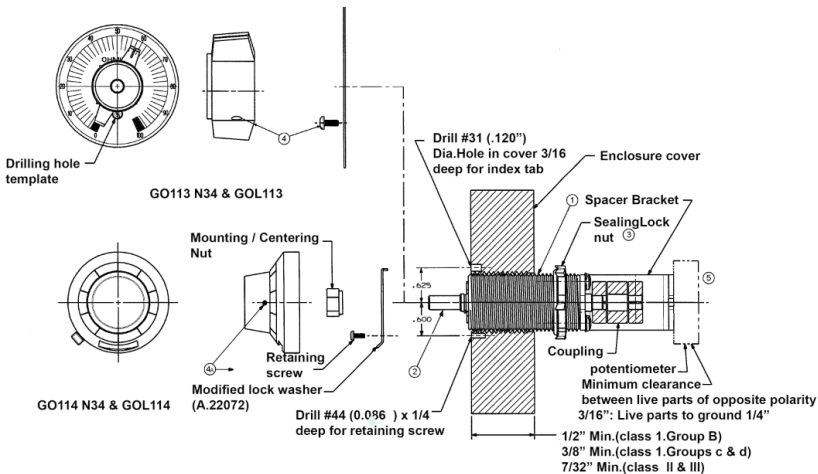
Page 1 of 3

These operators will accept standard rotary electrical devices with 1/4" diameter shafts, such as potentiometers, and are designed for enclosures that meet the requirements of Article 500 of the National Electrical Code. GO 113 N34 & GO 114 N34 devices are designed for mounting in enclosures with walls up to 1-1/2" thick. GOL113 & GOL114 devices are designed for mounting in enclosures with walls up to 2-1/2" thick.

1. DIRECTIONS FOR INSTALLATION

WARNING: Be sure to turn **OFF** the supplying circuit before beginning installation.

- Using the installation drawings below as a guide, drill and tap a 3/4" -14NPSM-2B hole in the enclosure cover / wall. The hole must be located so that a flat area is available to tighten the locknut on the inside of the cover, and enough room is allowed for mounting the dial assembly on the outside. In addition, the inside cover surface must be perpendicular to the threaded hole and smooth in order to properly seat the sealing locknut. For Group B locations, a minimum of 7 full threads engagement is required and for Group C & D locations, a minimum of 5 full threads is required. For proper electrical clearance, these devices should be mounted on 2-1/2" centers and 1-3/4" from any vertical wall.
- Remove the knob and dial and thread the remainder of the assembly through the hole from the inside of the cover until the end of the threaded body is flush with the cover face.
- Orient the assembly as desired, and tighten the sealing locknut to secure it. (The assembly may be staked in place, if desired).
- (For GO113 N34 & GOL113) Position the dial plate at the end of the body, drill the dial plate in the enclosure cover / wall with a #47 drill, 3/16" to 1/4" deep, and fasten the dial plate with the #2-56 self-lapping screws provided. Attach the control knob and secure it with its setscrews (you will need a 5/64" Allen wrench).
(4A) (For GO114 N34 & GOL114) Refer to the drilling template and an Allen wrench which are included to complete this installation.



KILLARK®

Chalmit

Victor
Lighting

Vantage
Technology

RIG POWER

HAWKE
International

3940 Dr. Martin Luther King Drive
St. Louis, MO 63113

P/N 00911740 FORM NO. K1081 R11/08 ECO-3-045-08

Page 2 of 3

- When installing the potentiometer or device, secure it to the flex coupling with the setscrews provided.
- Wire the system, secure the enclosure and turn **ON** the circuit to test the system.
NOTE: All installations must comply with applicable local and/or National Electrical Code.

2. OPERATIONAL DATA

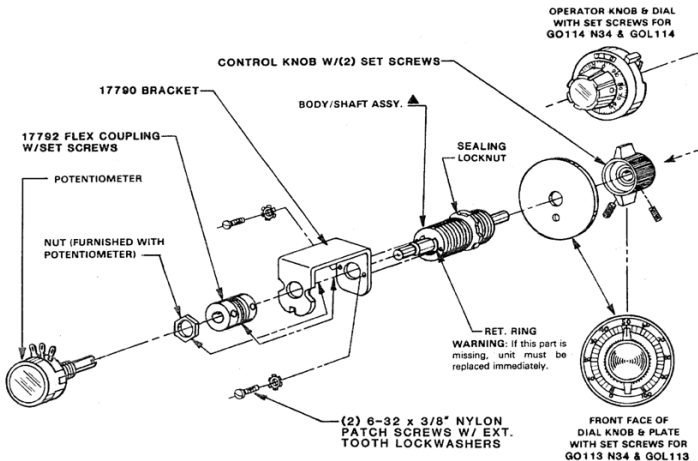
The devices used on these operators are electrical arcing devices. Therefore, the enclosure in which they are installed must be provided with external seals, as required by NEC Articles 501-5 & 502-5. In addition, the enclosure must be marked with a cautionary statement such as, "Caution: Disconnect this device from the supplying circuit before entering. Keep assembly tight while circuits are alive." This statement must be permanently visible after the enclosure has been installed.

3. MAINTENANCE DATA

"GO" Series Rotary Operators should be periodically checked for proper operation. The operator shaft should be lubricated occasionally if operating conditions require it.

WARNING: The surface between the body and shaft is a flame path. If excessive play develops between these parts, the body/shaft assembly must be replaced at once. Refer to the Parts Drawing on left and/or to the Killark factory for specific replacement parts.

PARTS DRAWING



▲ NOT SOLD AS A SEPARATE ITEM

REMEMBER TO SAVE ONE OF THESE SHEETS FOR MAINTENANCE PERSONNEL



3940 Dr. Martin Luther King Drive
St. Louis, MO 63113

P/N 00911740 FORM NO. K1081 R11/08 ECO-3-045-08

Page 3 of 3